

Stick Blender

User's manual

EN



SENCOR®

SHB 5501CH

Translation of the original manual

Prior to using this appliance, please read the user's manual thoroughly, even in cases, when one has already familiarised themselves with previous use of similar types of appliances. Only use the appliance in the manner described in this user's manual. Keep this user's manual in a safe place where it can be easily retrieved for future use.

We recommend saving the original cardboard box, packaging material, purchase receipt and responsibility statement of the vendor or warranty card for at least the duration of the legal liability for unsatisfactory performance or quality. In the event of transportation, we recommend that you pack the appliance in the original box from the manufacturer.

CONTENTS

IMPORTANT SAFETY INSTRUCTIONS	3
DESCRIPTION OF THE APPLIANCE.....	6
BEFORE FIRST USE.....	7
INTENDED USE OF THE APPLIANCE	7
ASSEMBLING AND DISASSEMBLING THE APPLIANCE	8
OPERATING THE APPLIANCE	9
QUICK GUIDE TO PROCESSING INGREDIENTS.....	10
CLEANING AND MAINTENANCE.....	11
STORAGE	11
TECHNICAL SPECIFICATIONS.....	11
INSTRUCTIONS AND INFORMATION REGARDING THE DISPOSAL OF USED PACKAGING MATERIALS	12
DISPOSAL OF USED ELECTRICAL AND ELECTRONIC EQUIPMENT.....	12

IMPORTANT SAFETY INSTRUCTIONS

READ CAREFULLY AND STORE FOR FUTURE USE.

- This appliance may be used by persons with physical or mental impairments or by inexperienced persons, if they are properly supervised or have been informed about how to use the appliance in a safe manner and understand the potential dangers.
- Children must not use this appliance or play with it. Keep this appliance and the power cord out of reach of children.
- Before connecting this appliance to a power socket, make sure the rated voltage stated on its rating label corresponds to the voltage in your power socket.
- This appliance is designed for household and is intended for blending, chopping, grating and whipping food. Do not use it to process foods that are too hard such as coffee beans, ice cubes, nutmeg, etc.
- Do not use the appliance in an industrial environment or outdoors. Do not use it for any other purposes than those intended.



Warning:

Incorrect use may lead to injuries.

- Do not place the appliance on an electric or gas stove or in its vicinity, on the edge of a table or on an unstable surface. Only place the appliance on an even, dry and stable surface.
- Only use the appliance with the original accessories that came with it.
- Make sure that the appliance is correctly assembled before putting it into operation.
- Do not touch moving rotating parts during operation. Otherwise, this could result in injury.

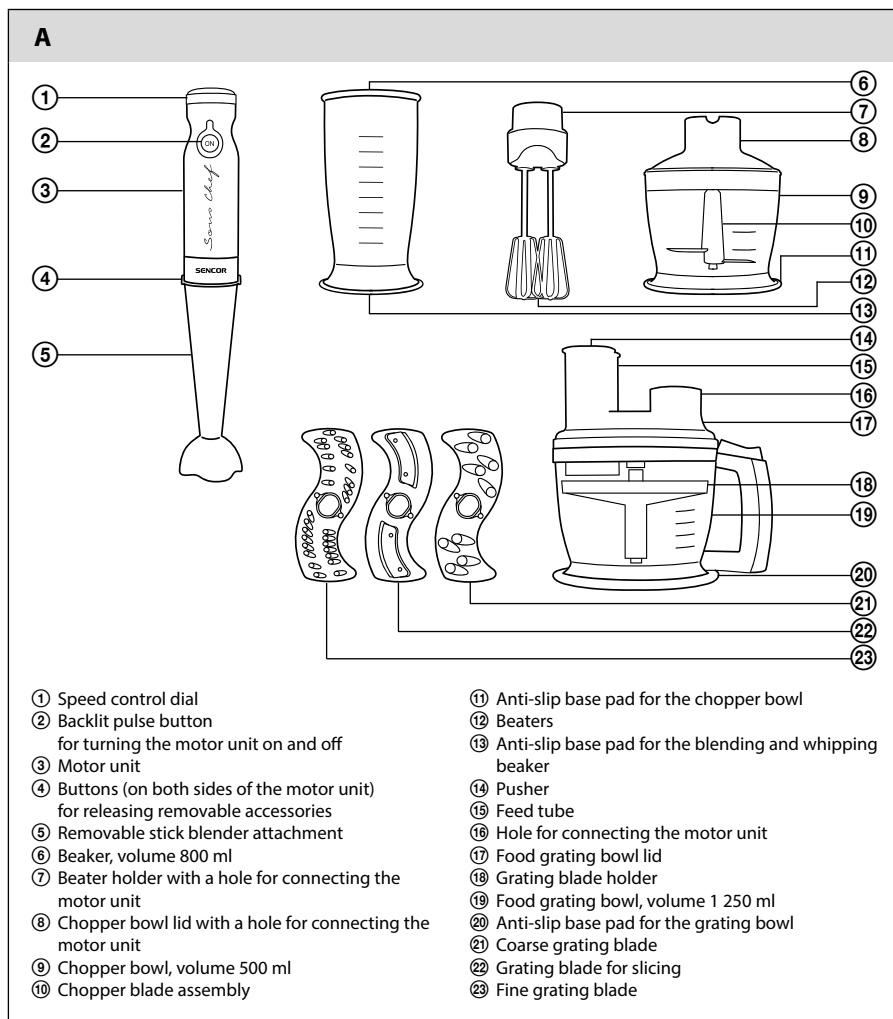
- Be especially careful when handling hot foods and liquids. Hot steam or splashing hot foods and liquids may cause scalding. For reasons of increased safety, allow hot foods and liquids to cool down to at least 45 °C before blending.
- Always use the supplied pusher to push ingredients through the feed tube. Never use your hands or other items.
- The operating time of the appliance is 1 minute. Before turning it on again, allow it to cool down for at least 3 to 5 minutes. When using the appliance to blend sticky or harder foodstuffs, interrupt operation already after 30 seconds.
- Do not turn on the appliance when it is empty. The incorrect use of the appliance may negatively affect its lifetime.
- Always turn off the appliance and disconnect it from the power socket if you will not be using it and if you will be leaving it without supervision, before assembly, disassembly, cleaning and before moving it.
- Check that the motor unit is turned off, disconnected from the power socket and that the rotating parts have come to a complete stop before disassembling the appliance into its individual parts.
- When handling the grating blades, blade assembly of the stick blender or chopper, especially when removing the grating blades or blade assembly, when emptying the bowl and cleaning it, take special care to avoid injury by the blades.
- Do not submerge the motor unit and its power cord in water or any other liquid, or wash these parts under running water.
- Ensure that the power plug contacts do not come into contact with moisture. Do not place heavy items on the power cord. Make sure the power cord does not hang over the edge of a table or that it is not touching a hot surface.

- Do not disconnect the appliance from the power socket by pulling on the power cord. This could damage the power cord or the socket. Disconnect the power cord from the power socket by pulling on the plug.
- If the power cord is damaged, it must be replaced by an authorised service centre or by another similarly qualified person, this will prevent the creation of a dangerous situation. It is forbidden to use the appliance if it has a damaged power cord.
- Do not use the appliance when it is not functioning properly or showing signs of damage.
- In order to prevent a hazardous situation arising, do not repair the appliance yourself or modify it in any way. Have all repairs or adjustments performed at an authorised service centre. By tampering with the appliance, you risk voiding your legal rights arising from unsatisfactory performance or quality warranty.

Stick Blender

SHB 5501CH

DESCRIPTION OF THE APPLIANCE

**Note:**

The appliance may be hung on an included wall-mounted holder. The installation of the holder requires the use of 2 screws and dowels, which are not included as accessories.

BEFORE FIRST USE

1. Take the appliance and its accessories out of the packaging materials.
2. Thoroughly wash all removable accessories that are intended to come into contact with food using warm water and a neutral kitchen detergent. Then rinse them with clean water and allow them to dry naturally or dry them out thoroughly using a wiping cloth. Clean parts A⑦, A⑧ and A⑩, which are equipped with a gear system, only using a dampened cloth. Take care that water does not enter into these parts. When cleaning the stick blender attachment A⑤, do not submerge the top end that connects to the motor unit A③.



Attention:

When cleaning the grating blades A②–③ and the blade assembly of the stick blender A⑤ and chopper A⑩, be especially careful not to injure yourself on the blades.

INTENDED USE OF THE APPLIANCE

Stick blender

- It is suitable for blending soft ingredients and liquids. It is used namely for preparing baby food, various types of cocktails, sauces, spreads, etc.

Chopper

- It is suitable for chopping foods such as meat, semi-hard and hard cheese, fruit and vegetables in their raw state, nuts, herbs, etc. Do not attempt to use it to process excessively hard foods such as ice cubes, coffee beans, nutmeg, cocoa beans, etc.

Hand mixer

- After attaching the holder A⑦ with the beaters A② to the motor unit A③, you may use the appliance as a hand mixer. A hand mixer is suitable for preparing light batters or for whipping cream, egg whites and creams. Do not use it to whip thick doughs.

Grater

- Serves to grate fruit and vegetables in their raw state, hard cheeses, chocolate, hard baked goods, etc.

ASSEMBLING AND DISASSEMBLING THE APPLIANCE

- Before you start assembling or disassembling the appliance, check that the motor unit A③ is turned off and disconnected from the power socket and that the rotating parts have come to a complete stop. Parts that are connected to the motor unit A③, must be thoroughly dry.

Stick blender

1. Attach the stick blender attachment A⑤ from underneath to the motor unit A③. The connection of both parts is indicated by a click.
2. Blend food in the beaker A⑥ or in another suitable container intended for coming into contact with food. The anti-slip base pad A⑬ also serves as a lid for the beaker A⑥, when you wish to use it for short term storage of food.
3. During disassembly, press and hold down the button A④ and at the same time remove the stick blender attachment A⑤ from the motor unit A③.

Chopper

1. Place the bowl A⑨ into the anti-slip base pad A⑪, and on to the central pin at the bottom of the bowl A⑨ seat the blade assembly A⑩.
2. Close the bowl using the lid A⑧, whilst ensuring that the blade assembly shaft ⑩ fits into the middle part of the lid A⑧ and that the safety locks along the sides of the lid A⑧ slide into the safety system of the bowl A⑨. Turn the lid A⑧ clockwise all the way. This will secure it in place, and is indicated by a click.
3. Place the motor unit A③ into the hole in the lid A⑧ and gently push it down until a click is heard. Now the chopper is assembled.
4. During disassembly, press and hold down the button A④ and at the same time remove the motor unit A③ from lid A⑧. Then continue in reverse sequence to the assembly of the chopper.

Hand mixer

1. Slide the beaters A⑫ into the holder A⑦, until they click in. Before use, always check that the beaters A⑫ are securely attached.
2. Attach the holder A⑦ with the beaters A⑫ from underneath the motor unit A③. Attachment is indicated by a click.
3. Blend the food in the beaker A⑥ or in another suitable container intended for coming into contact with food. The anti-slip base pad A⑬ also serves as a lid for the beaker A⑥, when you wish to use it for short term storage of food.
4. During disassembly, press and hold down the button A④ and at the same time remove the holder A⑦ with the beaters A⑫ from the motor unit A③. Then continue in reverse sequence to the assembly of the hand mixer.

Grater

1. With blades facing upwards, insert the grating blade A⑲, A⑳ or A㉑ into the holder A⑱ and push it down slightly until a click is heard and the cutting blade slides into the holder A⑱. Seat the shaft of the holder A⑱ on to the central pin at the bottom of the bowl A⑱.
2. Cover the bowl A⑱ using the lid A⑰, whilst ensuring that the safety locks along the sides of the lid A⑰ slide into the safety system of the bowl A⑱. Release the safety button located on the grip of the bowl A⑱, and turn the lid A⑰ clockwise all the way. Release the safety button. This will secure the lid A⑰ in place. Place the bowl A⑱ into the anti-slip base pad A⑳.
3. Place the motor unit A③ into the hole A⑱ and gently push it down until a click is heard. Insert the pusher A㉒ into the feed tube A⑱. Now the grater is assembled.
4. To disassemble proceed in the reverse sequence. To take off the motor unit A③ it is necessary to first press and hold the buttons A④. This will release the attachment, and the motor unit A③ can be taken out of the hole A⑱. Before removing the grinding blade A⑲, A⑳ or A㉑ from the holder A⑱, first release it by pushing down slightly on the latch from underneath the grater.

OPERATING THE APPLIANCE

1. Select the type of accessories that you wish to use and assemble the appliance according to the instructions in the chapter Assembling and disassembling the appliance.



Attention:

When assembling the chopper, place the food into the bowl A⑨ only after placing the blade assembly A⑩ on to the central pin at the bottom of the bowl A⑨. Do not fill the bowl A⑨ over the maximum mark.

2. Connect the motor unit A③ to a power socket. When connected to a power socket, the power switch A② will be lit. Set the required speed using the speed control dial A①. Turn the speed control dial A① clockwise to increase the speed, and anticlockwise to reduce the speed.
3. When the required speed is set, you may start the appliance by pressing the power button A②. Do not set the speed while the appliance is running. The appliance will run as long as the power switch A② is pressed. When the button A② is released, the appliance will stop. To prevent food from squirting out, keep the stick blender attachment blade assembly A⑤ / beaters A⑥ submerged while the appliance is running. Also prevent food from squirting out by not overfilling the bowl/beaker in which you are processing it. When using the chopper and stick blender, we recommend processing food by means of a short pulsing action, which will prevent excessive pulverisation of the food and optimal results will be achieved. When using the grater, start the motor unit A③, then place the ingredients gradually into the feed tube A⑭ and push them down slowly using the pusher A⑬. Never use fingers or other items to push the ingredients in. Regularly check that the bowl A⑨ is not overfilled.



Attention:

The maximum continuous operating time of the appliance is 1 minute. Then allow it to cool down for 3 to 5 minutes. When using the appliance to blend sticky or harder foodstuffs, interrupt operation already after 30 seconds.

4. After you finish using it, disconnect the power cord from the power socket. Make sure that the rotating parts have stopped rotating, and disassemble the appliance into its individual parts. Then clean all used parts according to the instructions in chapter Cleaning and maintenance.

QUICK GUIDE TO PROCESSING INGREDIENTS

Stick blender

Ingredients	Amount	Speed setting	Processing time
Baby food	300 g	Medium to maximum	45 s
Spreads	200 g	Medium to maximum	30 s
Fruit and vegetables (cooked)	200 g	Medium to maximum	45 s
Sauces	500 ml	Medium to maximum	45 s
Shakes/Cocktails	500 ml	Medium to maximum	30 s

Chopper

Ingredients	Amount	Speed setting	Processing time
Meat	150 g	Medium to maximum	30 s
Fruit and vegetables (raw)	100 g	Medium to maximum	15 s
Hard and semi-hard cheeses	100 g	Maximum	15 s
Hard bread products for breadcrumbs	50 g	Medium to maximum	20 s
Nuts with shells removed	50 g	Maximum	15 s
Herbs	25 g	Medium	10 s

- First, cut up large food pieces into cubes of approximately 2×2 cm and only then process with the chopper. With vegetables like onion, it is sufficient to cut them into quarters.

Hand mixer

Ingredients	Amount	Speed setting	Processing time
Egg whites	4 pcs	Maximum	60 s
Whipping cream	200 ml	Maximum	60 s
Light doughs	500 g	Medium to maximum	60 s

- Always whip cream and egg whites in a tall narrow beaker. When whipping egg whites, the beaters A(2) and the beaker must always be perfectly clean and dry, otherwise whipping up the egg whites may not succeed.

Grater

Grating blade type	Ingredients	Amount	Speed setting	Processing time
Grating blade A(2)	Bread products for breadcrumbs	150 g	Medium to maximum	45 s
Grating blade A(2)-(23)	Fruit and vegetables	500 g	Medium to maximum	40 s
Grating blade A(2)-(23)	Hard cheese	200 g	Medium	15 s

- First cut up larger pieces of food so that they pass through the feed tube A(9), and only then process with the grater.
- The above food processing times are only a reference. The actual processing time depends on the size of the ingredients, their amount and the required final consistency. If the required consistency is not achieved during the maximum operating time of the appliance, you may continue processing the food after the appliance has cooled down.

CLEANING AND MAINTENANCE

- Before cleaning it, make sure that the appliance is turned off, disconnected from the power socket and that the rotating parts have stopped.
- Disassemble the appliance into its individual parts. Thoroughly wash the used accessories using warm water and neutral kitchen detergent. Then rinse them with clean water and allow them to dry naturally or dry them out thoroughly using a wiping cloth. Clean parts A⑦, A⑧ and A⑰, which are equipped with a gear system, only using a dampened cloth. Take care that water does not enter into these parts. When cleaning the stick blender attachment A⑤, do not submerge the top end that connects to the motor unit A③. The beaker A⑥, and bowls A⑨ and A⑩, the anti-slip base pad A⑪, A⑬ and A⑳, the beaters A⑫, the blade assembly A⑭, holder A⑱ and grating blades A㉑–㉓ can be washed in a dishwasher. Other parts are not intended for washing in a dishwasher.
- After finishing using the stick blender, it is possible to clean the stick blender blade assembly A⑤ by submerging it in warm water with kitchen detergent, and running it for a short time. Then disconnect the appliance from the power socket, disassemble it, and rinse the blade assembly with clean drinking water and dry it thoroughly.



Attention:

When cleaning the grating blades A㉑–㉓ and the blade assembly of the stick blender A⑤ or chopper A⑩, be especially careful not to injure yourself on the blades.

- To clean the outer surface of the motor unit A③, use a cloth lightly dipped in a weak detergent solution. After applying the detergent solution, wipe the surface with a cloth lightly dampened in clean water and then wipe dry.
- Never submerge the motor unit A③ or the power cord in water or in any other liquid. Do not use solvents, abrasive cleaning products, etc. for cleaning the appliance. Otherwise the surface coat of the appliance may be damaged.

STORAGE

- When not using the appliance, store it in a dry place out of children's reach.

TECHNICAL SPECIFICATIONS

Rated voltage range	220–240 V
Rated frequency	50/60 Hz
Rated power input	1 200 W
Electrical shock protection class	II
Noise level	61 dB(A)

The declared noise emission level of the appliance is 61 dB(A), which represents a level A of acoustic power with respect to a reference acoustic power of 1 pW.

Explanation of technical terminology

Safety class for electrical shock protection:

Class II – Electrical shock protection is provided by double or heavy-duty insulation.

Changes to text and technical parameters are reserved.

INSTRUCTIONS AND INFORMATION REGARDING THE DISPOSAL OF USED PACKAGING MATERIALS

Dispose of used packaging material at a site designated for waste in your municipality.

DISPOSAL OF USED ELECTRICAL AND ELECTRONIC EQUIPMENT



This symbol on products or original documents means that used electric or electronic products must not be added to ordinary municipal waste. For proper disposal, renewal and recycling hand over these appliances to determined collection points. Alternatively, in some European Union states or other European countries you may return your appliances to the local retailer when buying an equivalent new appliance. Correct disposal of this product helps save valuable natural resources and prevents potential negative effects on the environment and human health, which could result from improper waste disposal. Ask your local authorities or collection facility for more details. In accordance with national regulations penalties may be imposed for the incorrect disposal of this type of waste.

For business entities in European Union states

If you want to dispose of electric or electronic appliances, ask your retailer or supplier for the necessary information.

Disposal in other countries outside the European Union.

This symbol is valid in the European Union. If you wish to dispose of this product, request the necessary information about the correct disposal method from the local council or from your retailer.



This appliance meets all the basic requirements of EU directives related to it.