

# CANYON

## 14 port USB-C Hub DS-90

DS-90

**100W**

USB-C PD



Ethernet  
1000 Mbit/s

**4K/60Hz**

Support

**10Gbps**

Data transfer

**P&P**

Plug and play



12 LED indicators



On / Off  
power button



4 monitors  
simultaneously





**MODEL**

CNS-HDS90 space gray 5291485008918

- 1xUSB-A 3.2 Gen 2 (10 Gbps);
- 1xUSB-A 3.0 (5 Gbps);
- 1xUSB-A 2.0 (480 Mbps);
- 1xUSB-C 3.2 Gen 2 (10 Gbps);
- Ethernet 1000 Mbps;
- 3,5mm audio output, 48K stereo;
- SD/TF slots;
- 2x4K UHD (60Hz);
- VGA resolution up to 1080P x 60Hz,

- DP (4Kx60Hz);
- Simultaneous work with 4 monitors;
- Aluminum case;
- Integrated braided cable 20cm;
- 12 LED indicators;
- Security lock hole for safety;
- Heat radiating holes
- ON / OFF power button

If your laptop is equipped with USB type-C, this universal docking station CNS-HDS90, which is the 3rd generation of the popular model, will improve its connectivity features with 14 built-in interfaces to the maximum. Using Display Port (4Kx60Hz), HDMI (2x4K UHD (60Hz) and VGA (up to 1080Px60 Hz), you can connect your laptop to four monitors simultaneously. The up to 100W USB-C PD charging port allows you to charge your connected device at optimal speed. Also, the USB hub Canyon HDS90 has built-in 3.5mm audio jack for headphones/microphone, SD and TF card reader, Ethernet for flawless internet connection and USB-C 3.2 Gen 2 for fast data transferring. The Hub CNS-HDS90 for 14 interfaces will make your workspace look stylish and modern.

Designed for Apple

# Simultaneous work with 4 monitors



## For macOS: 4 external monitors (Mirror mode)



## For Windows OS: supports 4 external monitors for both Mirror and MST modes



# The Next Generation of USB ports

High-speed data transmission up to 10 Gbps

10 Gbps  
(20 x USB 2.0)



USB 3.2 Gen 2

5 Gbps  
(10 x USB 2.0)



USB 3.0

480 Mbps

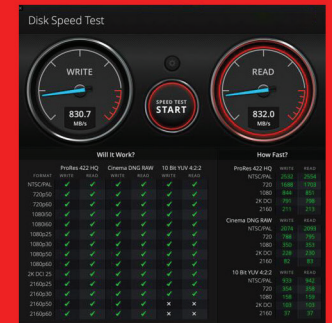


USB 2.0



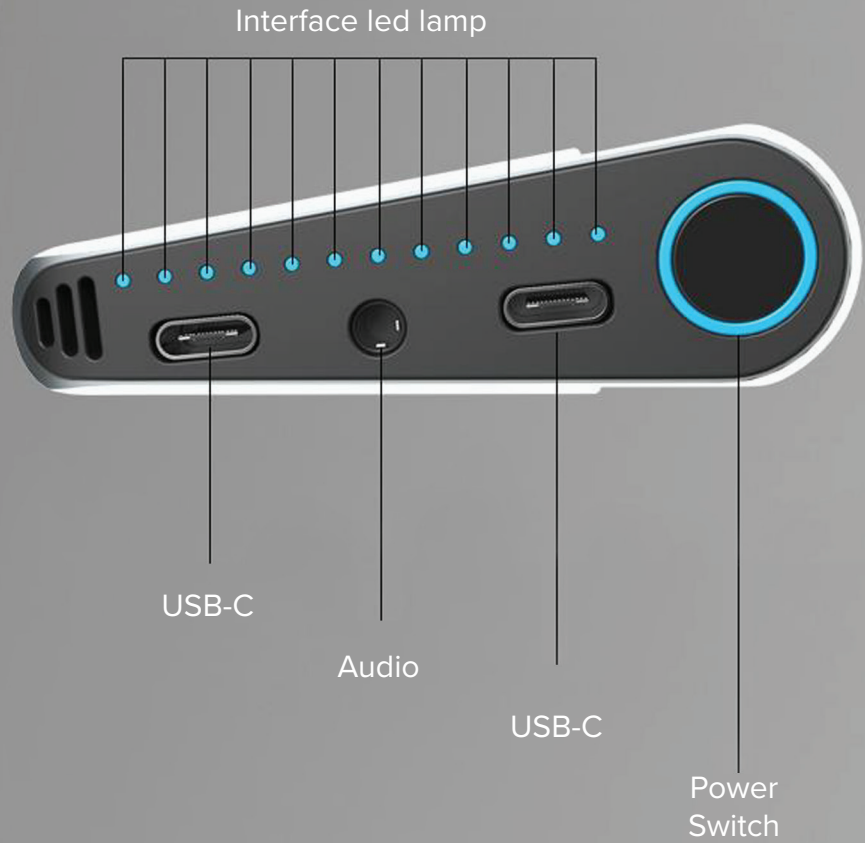
USB A 3.2 GEN 2  
10 Gbps

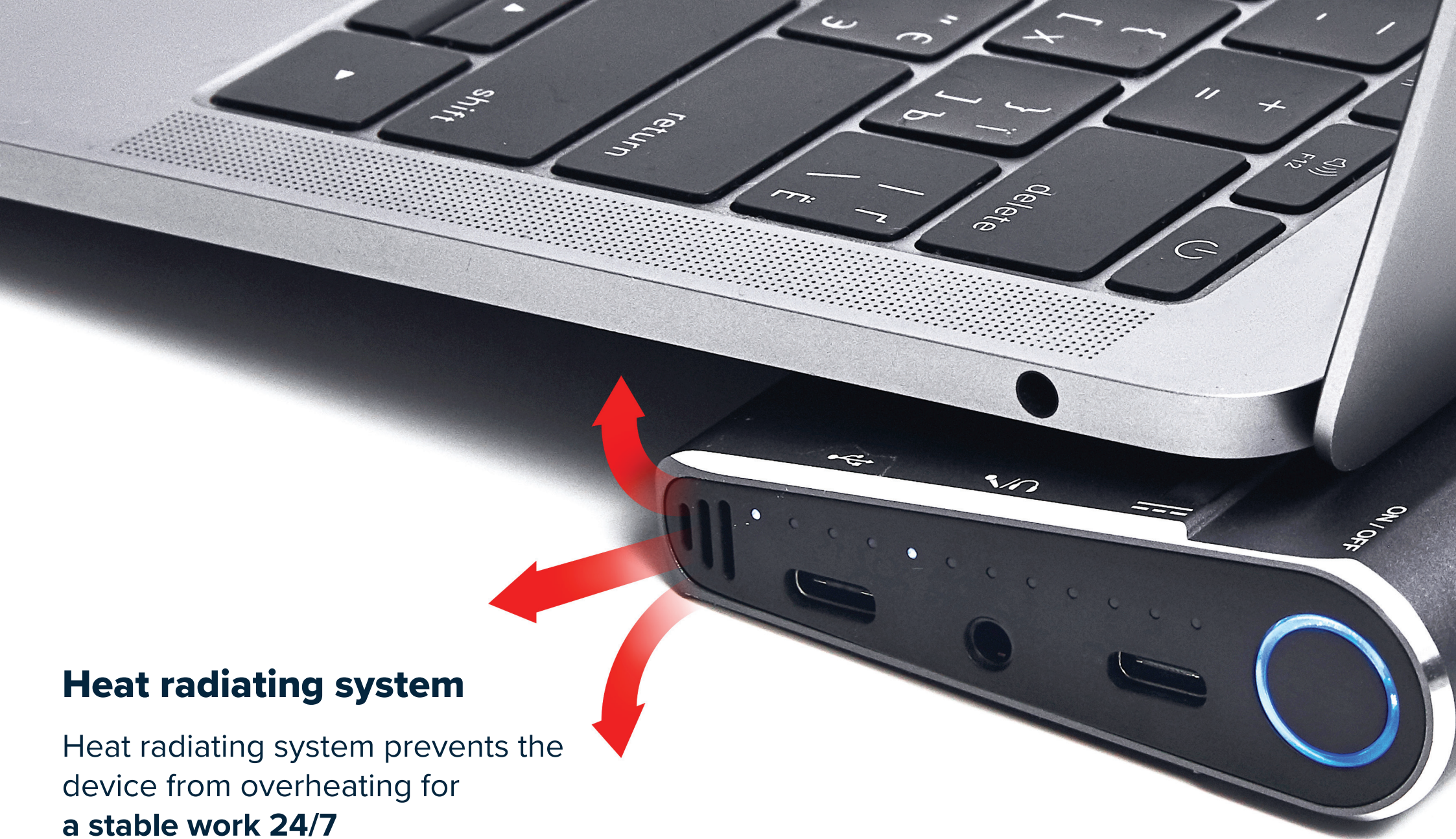
USB C 3.2 GEN 2  
10 Gbps





# On/off power button





## Heat radiating system

Heat radiating system prevents the device from overheating for a stable work **24/7**