

WAHL CLIPPER CORPORATION
World Headquarters
P.O. Box 578, Sterling, IL 61081

Wahl (UK) Ltd.
Herne Bay Trade Park
Sea Street Herne Bay, Kent
CT6 8JZ England


Wahl Australia Pty Ltd.
PO Box 456
Acacia Ridge QLD 4110
Australia

Wahl India Grooming Products
Pvt. Ltd.
B-1002, 10TH Floor, B-Wing, Lotus
Corporate Park,
Off Jay Coach Flyover, Western
Express Highway,
Goregaon-East, Mumbai-400 063.

Wahl Clipper (PTY) Ltd.
Suite L9 & L10
Hingham Field Office Park
79 Boeing Road East
Bedfordview, Gauteng 2007
South Africa

Wahl International Consumer
Group B.V.
Engelenburgstraat 36
7391 AM Twello, The Netherlands

WAHL MEA FZCO
Office #123, Building # 6E- A
PO Box -371395
Dubai Airport Free Zone, Dubai
United Arab Emirates

WAHL Russia
(ООО «Волл Рус») 
Российская Федерация
129164, Москва,
Ракетный бульвар, 16
info@wahlrus.ru

Wahl Argentina
Av. Alvarez Jonte 5655
Buenos Aires (C1407GPK)
Argentina

Wahl Clipper Brasil
Rodovia Geraldo Scavone, 2300
UC 45, Pedregulho.
Jacareí - SP. CEP: 12305490

Wahl GmbH
Roggenbachweg 9
78089 Unterkirnach,
Germany

WAHL Spain
Fernando Giner de los Rios 12
46910 Sedavi
Valencia, Spain

© 2018 Printed in China
Wahl® is a registered trademark
of Wahl Clipper Corporation

www.wahl-consumer.com



WAHL Travel Shaver

MODEL/TYPE 3615



Part No. 3615-1070

Accessories

Travel Shaver



Replacement Cutting Blade



Replacement Shaving Foil



Cleaning Brush

Travel Pouch



Charging Cable Types

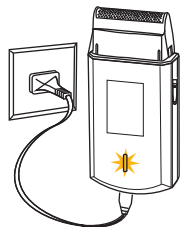
2-pin Plug



3-pin Plug

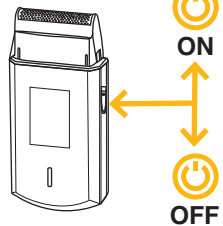


1

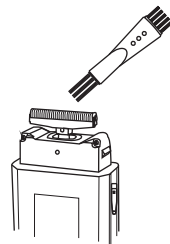


8 h = 45 min

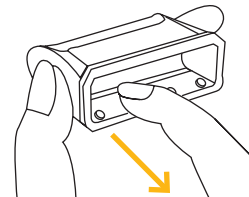
2



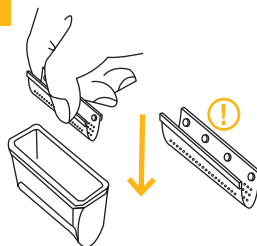
2



3



4



5

